

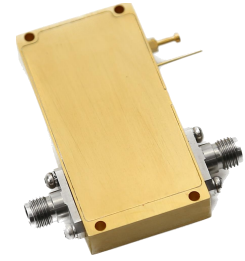
18-26.5GHz Power Amplifier

P/N: PA180265GA2W



Description:

The power amplifier is a power amplifier with a typical small signal gain of 35 dB across the frequency range of 18 to 26.5 GHz. The typical output power Psat 34 dBm. The DC power requirement for the amplifier is +15VDC/2800mA. Accept customization according to different needs.



- Radar Systems
- Communication Systems
- Receivers Systems

Electrical Specifications (+25°C) :

| Parameter | Min. | Typ. | Max. | Units |
|----------------------------|------|----------------------------|------|-------|
| Frequency Range | | 18.0-26.5 | | GHz |
| Gain | 30 | 35 | | dB |
| Gain Flatness | | | ±2 | dB |
| Input VSWR | | | 2.0 | - |
| Output VSWR | | 2.5 | | - |
| Noise Figure | | | 7 | dB |
| Output Power for (P1dB) | 33 | | | dBm |
| Output Power Psat | | 34 | | dBm |
| Output IP3 | | 42 | | dBm |
| Input Max Power(no damage) | | | 5 | dBm |
| DC Voltage(+15V) | | 2800 | | mA |
| Impedance | | 50 | | Ω |
| Input/Output Connector | | 2.92-Female/2.92-Female | | |
| Material | | Aluminium/Gold Painting | | |
| Weight | | 55g | | |
| Package Sealing | | General Sealing (Standard) | | |

Environmental Specifications:

- ※ Operational Temperature -45°C~+75°C
- ※ Storage Temperature -55°C~+125°C



OBSERVE
PRECAUTIONS ELECTROSTATIC
SENSITIVE DEVICES

MICZEN THCHNOLOGIES CO.,LTD.

Phone: +86 28 65003621 | E-mail: sales@miczen.com | Web: www.miczen.com

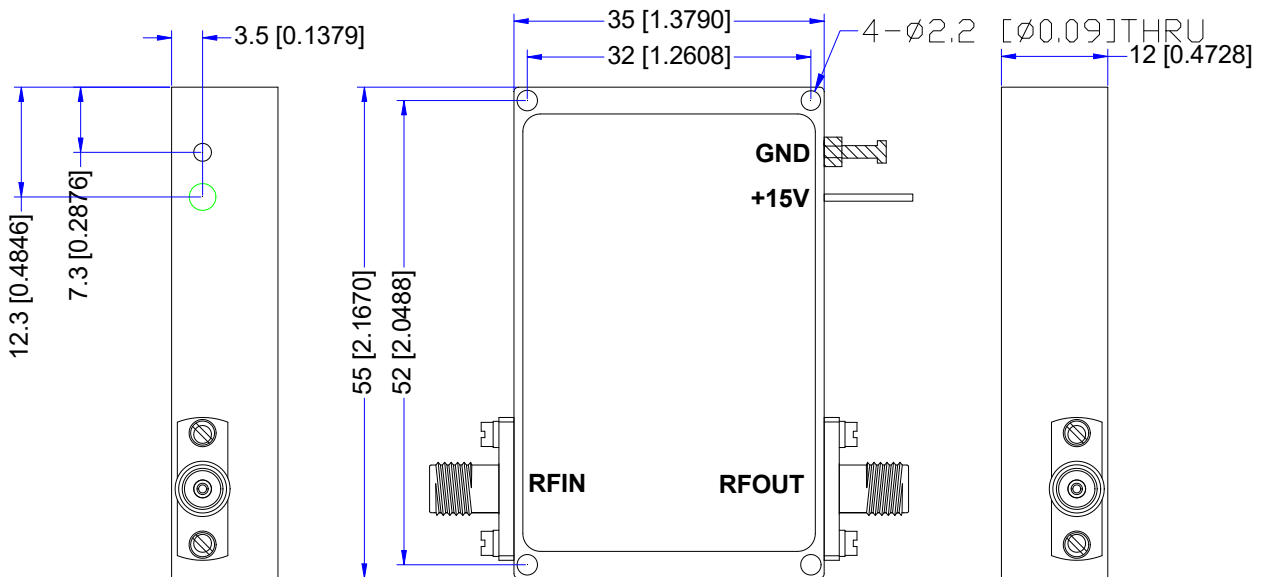
18-26.5GHz Power Amplifier

P/N: PA180265GA2W



■ Outline Drawing

All Dimensions in mm (inches) Tolerance ± 0.25 (0.01)



*****Heat Sink required during operation*****

NOTE:

1. The product is designed to meet environmental ratings but not tested. If you need to test environmental condition, please contact our sales department.
2. Miczen technologies co., Ltd. reserves the right to change the above information without notice.

MICZEN THCHNOLOGIES CO.,LTD.

Phone: +86 28 65003621 | E-mail: sales@miczen.com | Web: www.miczen.com

18-26.5GHz Power Amplifier

P/N: PA180265GA2W



■ Performance Plot

