

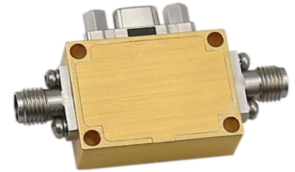
27-30GHz Broadband Switch

P/N: MZSPDT2730GD9



Description:

The switch is a broadband PIN switch with a typical Loss insertion of 3.0 dB and a high isolation of 60dB across the frequency range of 27 to 30 GHz. The typical switch speed 50ns. The DC power requirement for the switch is +/-5 V/50 mA. Accept customization according to different needs.



- Radar Systems
- Communication Systems
- Receivers Systems

Electrical Specifications (+25°C) :

Parameter	Min.	Typ.	Max.	Units
Frequency Range		27-30		GHz
Insertion Loss		3.0	5.2	dB
Isolation	48	60		dB
Input VSWR		1.2	1.3	-
Output VSWR		1.18	1.2	-
Switch Speed		50	100	ns
Power Handling			0.25	W
DC Current (Vcc=+/-5V)		50/50		mA
Control Logic TTL		0/+5		v
Control Port		MICROD-9P-Male		
Impedance		50		Ω
Input Output Connector		2.92-K/2.92-K		
Switch Type		Reflection		
Material		Aluminium\Gold Painting		
Weight		14g		
Package Sealing		General Sealing (Standard)		

Environmental Specifications:

- ※ Operational Temperature -25°C~+85°C
- ※ Storage Temperature -55°C~+125°C



OBSERVE
PRECAUTIONS ELECTROSTATIC
SENSITIVE DEVICES

MICZEN THCHNOLOGIES CO.,LTD.

Phone: +86 28 65003621 | E-mail: sales@miczen.com | Web: www.miczen.com

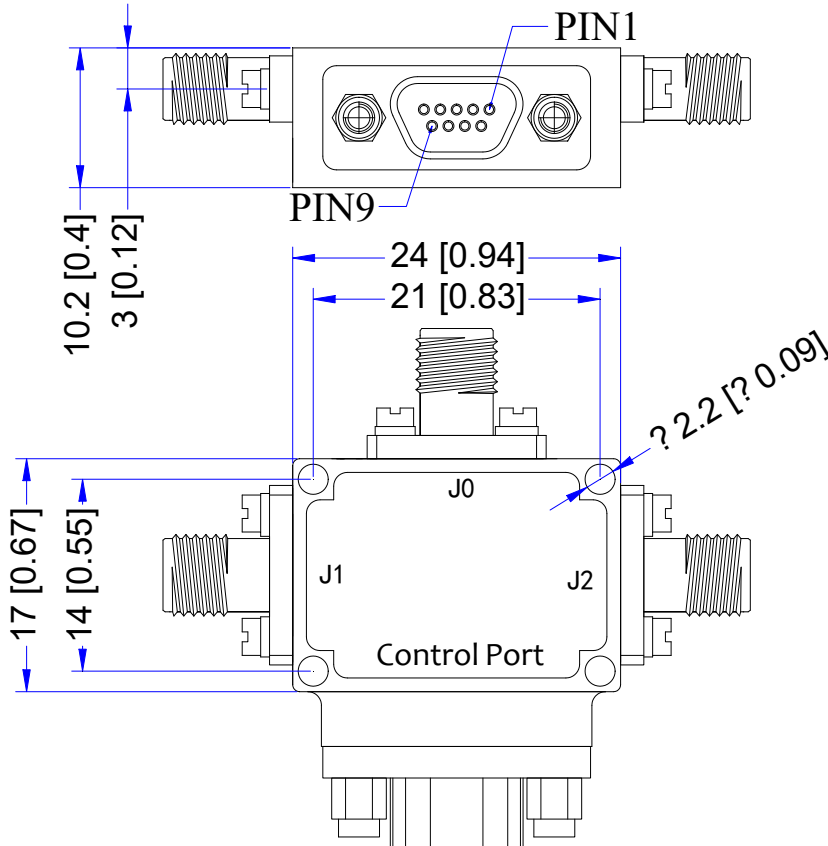
27-30GHz Broadband Switch

P/N: MZSPDT2730GD9



■ Outline Drawing

All Dimensions in mm (inches) Tolerance ± 0.25 (0.01)



MICROD-9P-Male								
1	2	3	4	5	6	7	8	9
+5V	-5V	GND	C1	NC	NC	NC	NC	NC

Truth Table	
Control TTL Input	Signal Path State
C1	
0	J0-J1
1	J0-J2

NOTE:

1. The product is designed to meet environmental ratings but not tested. If you need to test environmental condition, please contact our sales department.
2. Miczen technologies co., Ltd. reserves the right to change the above information without notice.

MICZEN THCHNOLOGIES CO.,LTD.

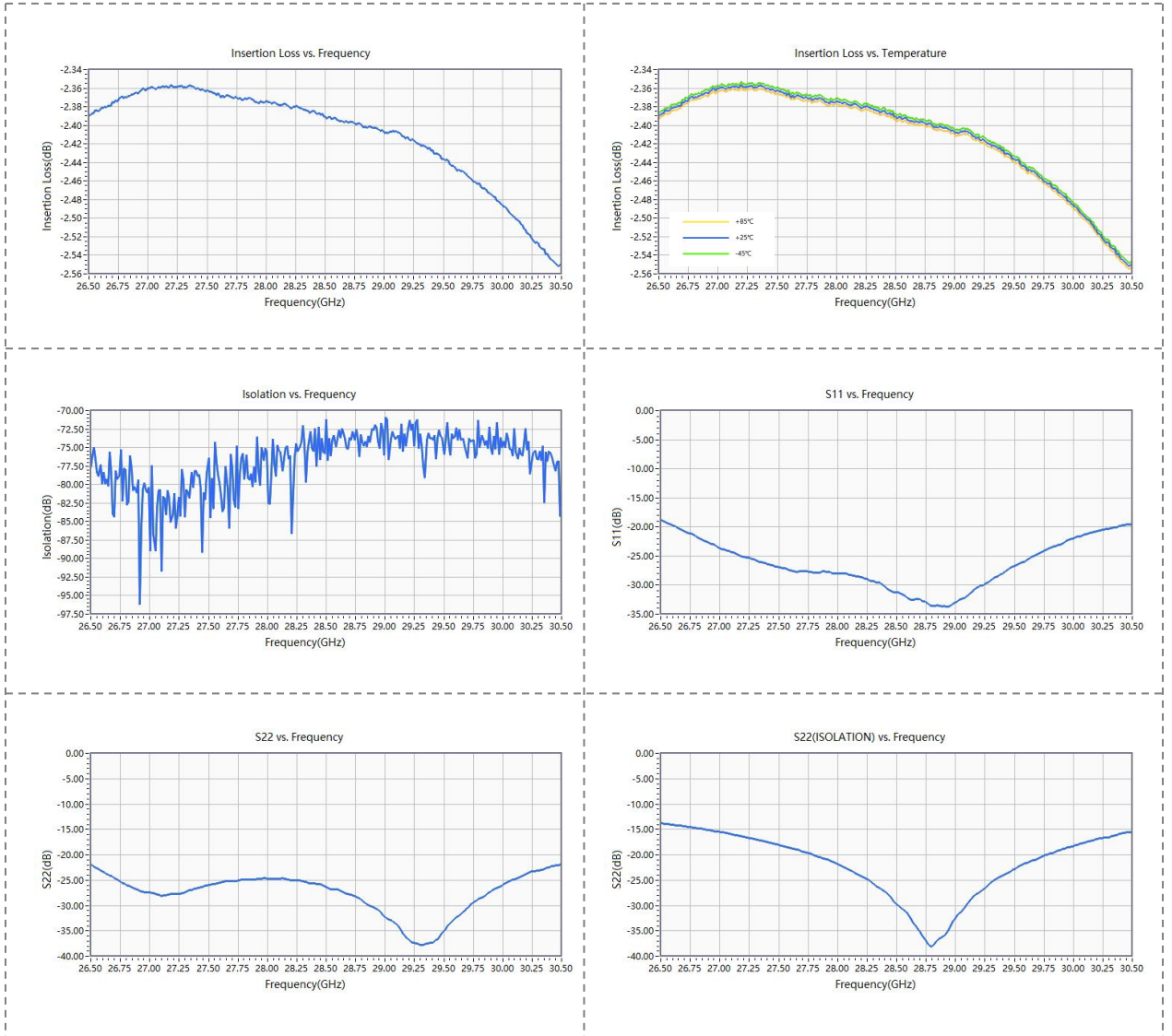
Phone: +86 28 65003621 | E-mail: sales@miczen.com | Web: www.miczen.com

27-30GHz Broadband Switch

P/N: MZSPDT2730GD9



Performance Plot



MICZEN THCNLOGIES CO.,LTD.

Phone: +86 28 65003621 | E-mail: sales@miczen.com | Web: www.miczen.com