

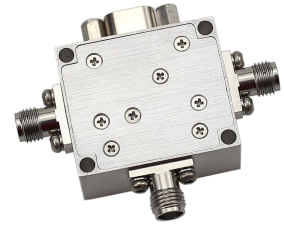
2-18GHz Broadband Switch

P/N: MZSPDT0218GA60A



Description:

The switch is a broadband PIN switch with a typical Loss insertion of 2.5 dB and a high isolation of 65dB across the frequency range of 2 to 18 GHz. The typical switch speed 500ns. The DC power requirement for the switch is +/-5 V/50 mA. Accept customization according to different needs.



- Radar Systems
- Communication Systems
- Receivers Systems

Electrical Specifications (+25°C) :

Parameter	Min.	Typ.	Max.	Units
Frequency Range		2-18		GHz
Insertion Loss		2.2	2.5	dB
Isolation	60	65		dB
Input VSWR		1.5	1.8	-
Output VSWR		1.5	1.8	-
Switch Speed		500	1000	ns
Power Handling			23	dBm
DC Current (Vcc=+/-5V)		50/50		mA
Control Logic TTL		0/+5		v
Impedance		50		Ω
Input Output Connector		SMA-female/SMA-female		
Material		Aluminium\Gold Painting		
Weight		24g		
Package Sealing		General Sealing (Standard)		

Environmental Specifications:

- ※ Operational Temperature -25°C~+85°C
- ※ Storage Temperature -55°C~+125°C



OBSERVE
PRECAUTIONS ELECTROSTATIC
SENSITIVE DEVICES

MICZEN THCHNOLOGIES CO.,LTD.

Phone: +86 28 65003621 | E-mail: sales@miczen.com | Web: www.miczen.com

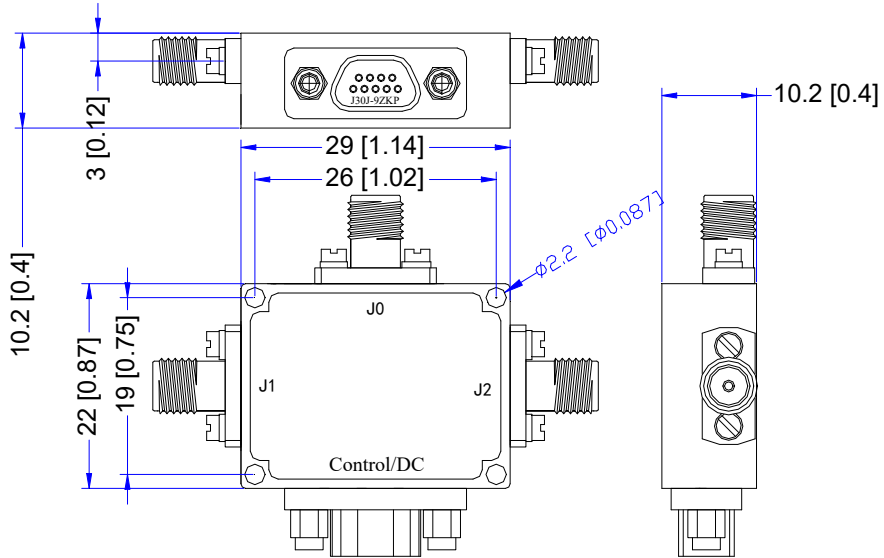
2-18GHz Broadband Switch

P/N: MZSPDT0218GA60A



■ Outline Drawing

All Dimensions in mm (inches) Tolerance ± 0.25 (0.01)



Truth Table	
TTL Control Input	Signal Path State
C1	
0	J0-J1
1	J0-J2

TTL Control Voltages & DC	
Stage	Bias Condition
VDD	+5V ($\pm 5\%$)
VEE	-5V ($\pm 5\%$)
Low	0 to 0.8Vdc
High	2.0 to +5.0Vdc

J30J-9ZKP Define	1	2	3	4	5	6	7	8	9
	+5V	-5V	GND	C1	NC	NC	NC	NC	NC

NOTE:

1. The product is designed to meet environmental ratings but not tested. If you need to test environmental condition, please contact our sales department.
2. Miczen technologies co., Ltd. reserves the right to change the above information without notice.

MICZEN THCHNOLOGIES CO.,LTD.

Phone: +86 28 65003621 | E-mail: sales@miczen.com | Web: www.miczen.com