

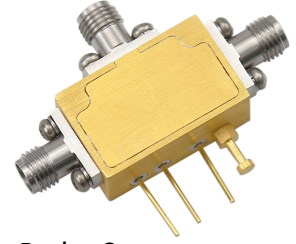
2-18GHz Broadband Switch

P/N: MZSPDT0218GA



Description:

The switch is a broadband PIN switch with a typical Loss insertion of 2.2 dB and a high isolation of 75dB across the frequency range of 2 to 18 GHz. The typical switch speed 50ns. The DC power requirement for the switch is +/-5 V/50 mA. Accept customization according to different needs.



- Radar Systems
- Communication Systems
- Receivers Systems

Electrical Specifications (+25°C) :

Parameter	Min.	Typ.	Max.	Units
Frequency Range		2-18		GHz
Insertion Loss	1.6dB Typ@8~12GHz/2.2dB Typ@12-18GHz			dB
Isolation	75dB Typ@8~12GHz/65dB Typ@12-18GHz			dB
Input VSWR		1.5		-
Output VSWR		1.5		-
Switch Speed		50	100	ns
Power Handing			30	dBm
DC Current (Vcc=+/-5V)		50/50		mA
Control Logic TTL		0/+5		v
Impedance		50		Ω
Input Output Connector	SMA-female/SMA-female			
Material	Aluminium\Gold Painting			
Weight		50g		
Package Sealing	General Sealing (Standard)			

Environmental Specifications:

- ※ Operational Temperature -25°C~+85°C
- ※ Storage Temperature -55°C~+125°C



OBSERVE
PRECAUTIONS ELECTROSTATIC
SENSITIVE DEVICES

MICZEN THCHNOLOGIES CO.,LTD.

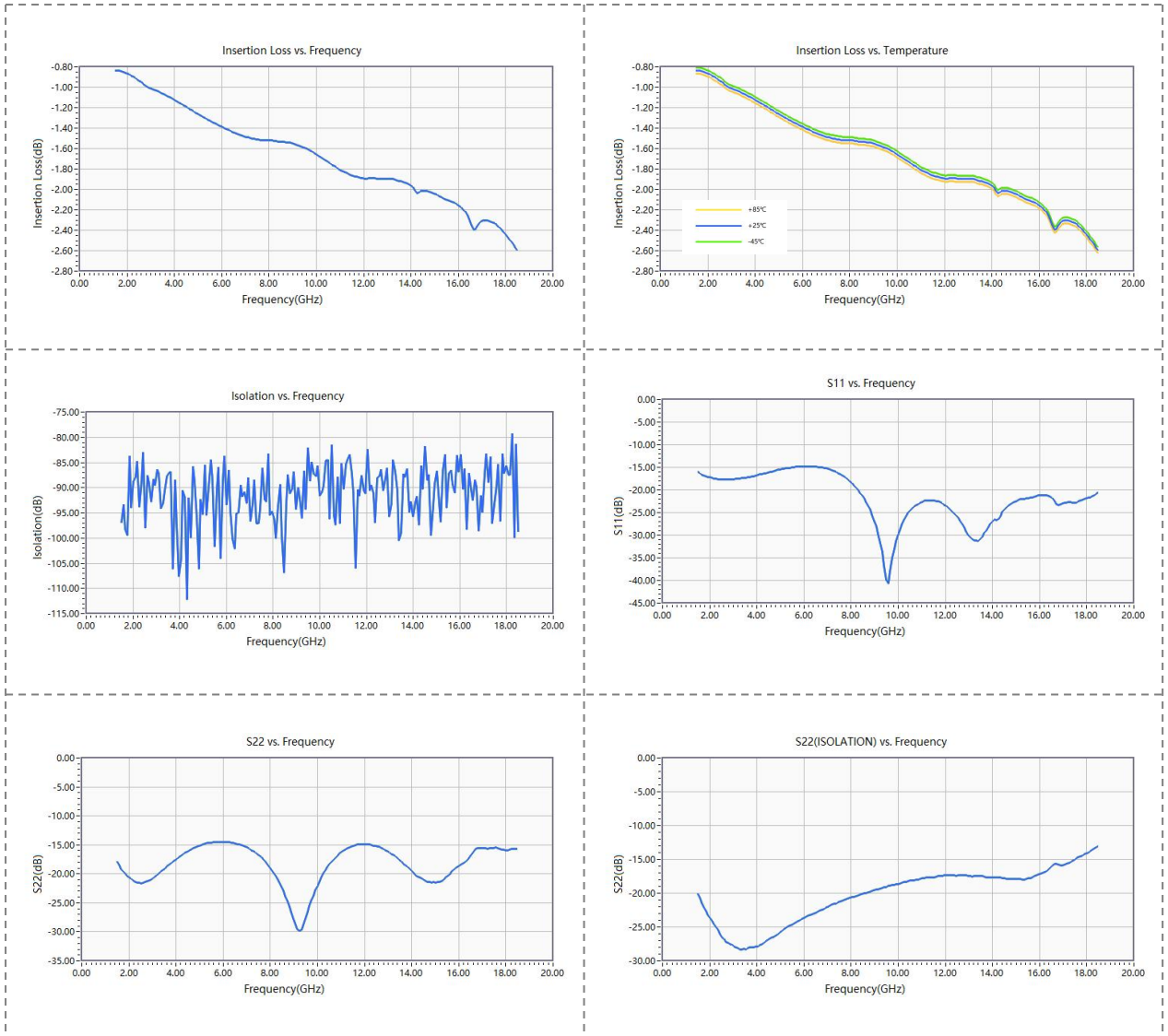
Phone: +86 28 65003621 | E-mail: sales@miczen.com | Web: www.miczen.com

2-18GHz Broadband Switch

P/N: MZSPDT0218GA



Performance Plot



MICZEN THCNLOGIES CO.,LTD.

Phone: +86 28 65003621 | E-mail: sales@miczen.com | Web: www.miczen.com