

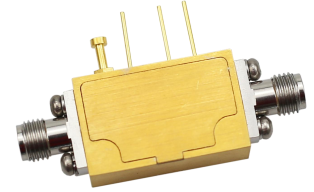
# 2-4GHz Broadband Switch

P/N: MZSPDT0204GR



## Description:

The switch is a broadband PIN switch with a typical Loss insertion of 0.8 dB and a high isolation of 80dB across the frequency range of 2 to 4 GHz. The typical switch speed 50ns. The DC power requirement for the switch is +/-5 V/50 mA. Accept customization according to different needs.



- Radar Systems
- Communication Systems
- Receivers Systems

## Electrical Specifications ( +25°C ) :

Parameter	Min.	Typ.	Max.	Units
Frequency Range		2-4		GHz
Insertion Loss			0.8	dB
Isolation	80			dB
Input VSWR			1.5	-
Output VSWR			1.5	-
Switch Speed			50	ns
Power Handing			30	dBm
DC Current (Vcc=+/-5V)		30		mA
Control Logic TTL		0/+5		v
Impedance		50		Ω
Input Output Connector		SMA-female/SMA-female		
Switch Type		Reflective		
Material		Aluminium\Gold Painting		
Weight		-		
Package Sealing		General Sealing (Standard)		

## Environmental Specifications:

- ※ Operational Temperature -25°C~+85°C
- ※ Storage Temperature -55°C~+125°C



OBSERVE  
PRECAUTIONS ELECTROSTATIC  
SENSITIVE DEVICES

MICZEN THCHNOLOGIES CO.,LTD.

Phone: +86 28 65003621 | E-mail: sales@miczen.com | Web: www.miczen.com

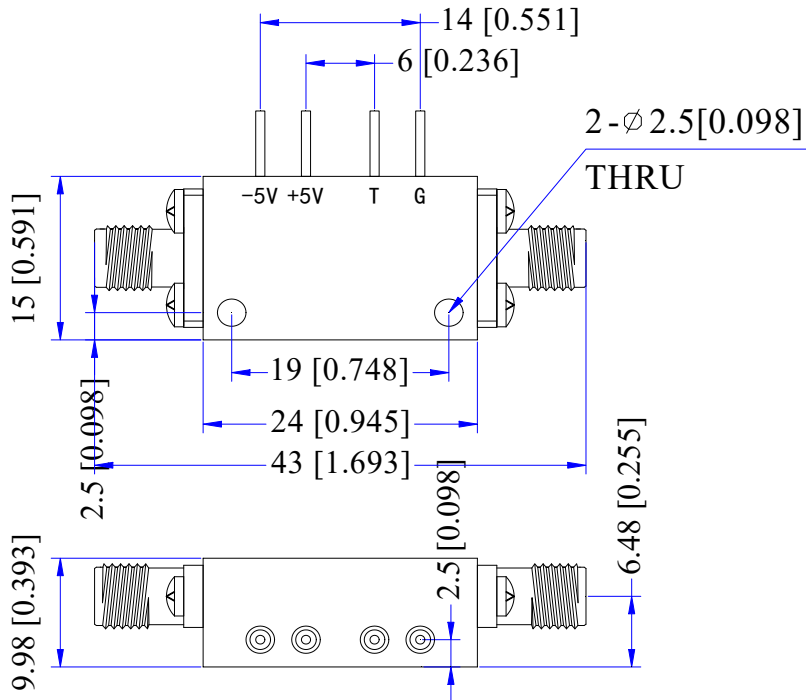
# 2-4GHz Broadband Switch

P/N: MZSPDT0204GR



## ■ Outline Drawing

All Dimensions in mm (inches) Tolerance  $\pm 0.25$  (0.01)



### NOTE:

1. The product is designed to meet environmental ratings but not tested. If you need to test environmental condition, please contact our sales department.
2. Miczen technologies co., Ltd. reserves the right to change the above information without notice.

**MICZEN THCHNOLOGIES CO.,LTD.**

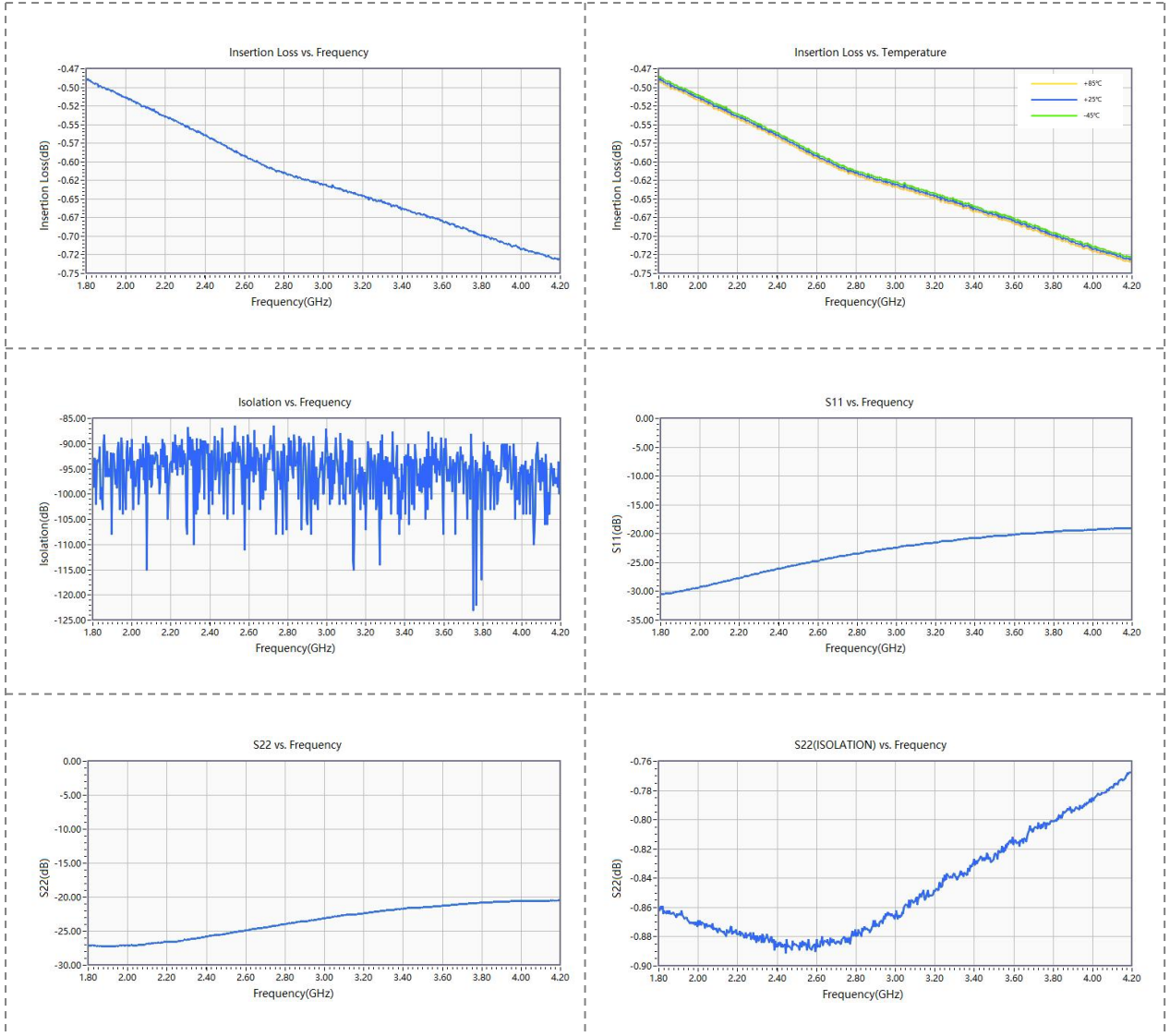
Phone: +86 28 65003621 | E-mail: sales@miczen.com | Web: www.miczen.com

# 2-4GHz Broadband Switch

P/N: MZSPDT0204GR



## Performance Plot



MICZEN THCNOLOGIES CO.,LTD.

Phone: +86 28 65003621 | E-mail: sales@miczen.com | Web: www.miczen.com