

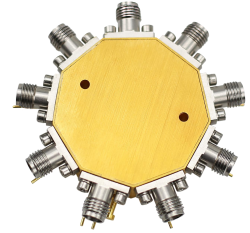
0.5-40GHz Broadband Switch

P/N: MZSP8T00540GA



Description:

The switch is a broadband PIN switch with a typical Loss insertion of 6.5 dB and a high isolation of 50dB across the frequency range of 0.5 to 40 GHz. The typical switch speed 50ns. The DC power requirement for the switch is +/-5 V/50 mA. Accept customization according to different needs.



- Radar Systems
- Communication Systems
- Receivers Systems

Electrical Specifications (+25°C) :

Parameter	Min.	Typ.	Max.	Units
Frequency Range		0.5-40		GHz
Insertion Loss		6.5		dB
Isolation	50			dB
Input VSWR		2.5		-
Output VSWR		2.5		-
Switch Speed		50	100	ns
Power Handling			23	dBm
Input Third Order Intercept	37			dBm
DC Current (Vcc=+/-5V)		220/50		mA
Control Logic TTL		0/+5		v
Impedance		50		Ω
Input Output Connector		2.92-k/2.92-K		
Switch Type		Absorption		
Material		Aluminium\Gold Painting		
Weight		44g		
Package Sealing		General Sealing (Standard)		

Environmental Specifications:

- ※ Operational Temperature -25°C~+85°C
- ※ Storage Temperature -55°C~+125°C



OBSERVE
PRECAUTIONS ELECTROSTATIC
SENSITIVE DEVICES

MICZEN THCHNOLOGIES CO.,LTD.

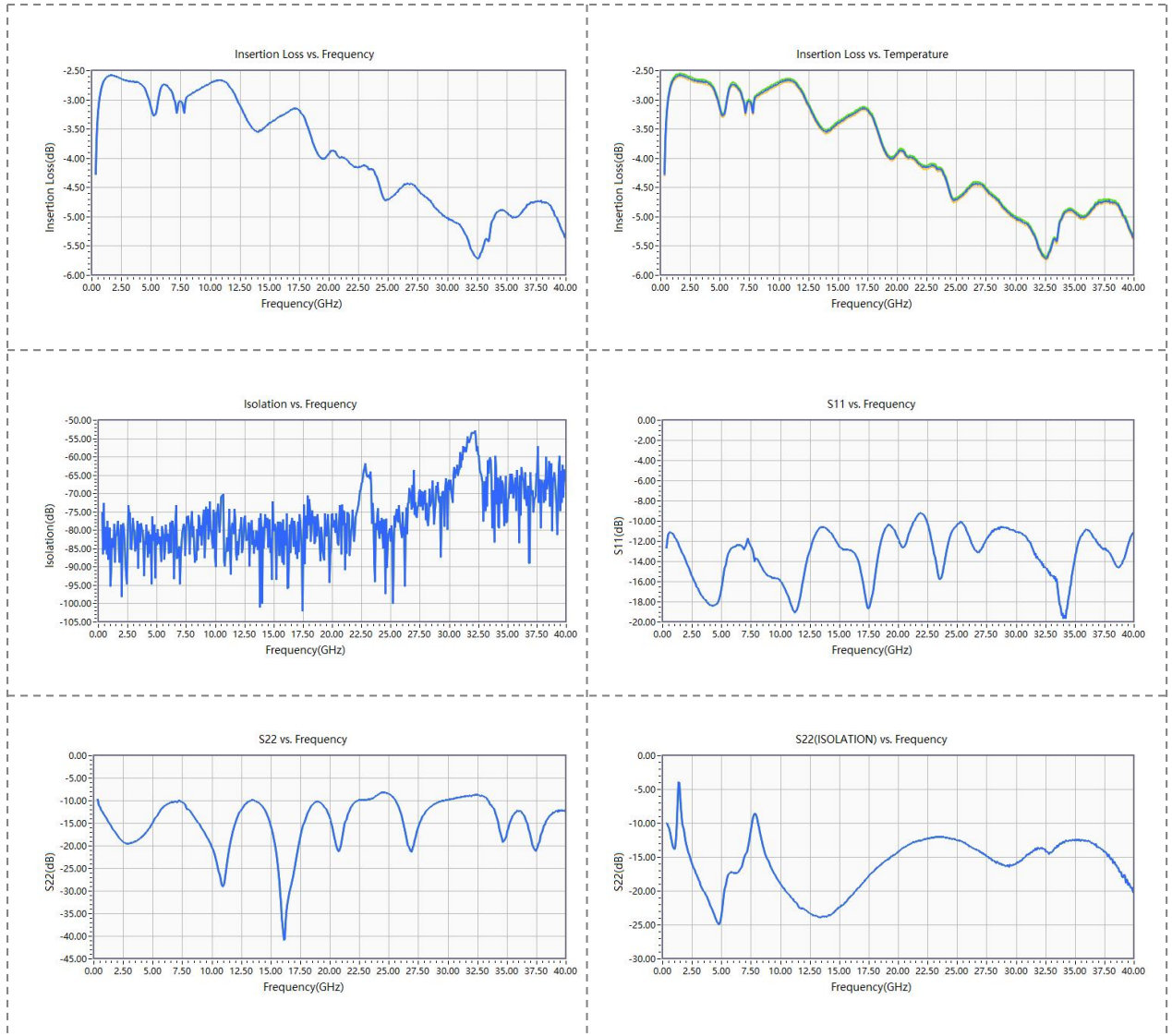
Phone: +86 28 65003621 | E-mail: sales@miczen.com | Web: www.miczen.com

0.5-40GHz Broadband Switch

P/N: MZSP8T00540GA



Performance Plot



MICZEN THCNOLOGIES CO.,LTD.

Phone: +86 28 65003621 | E-mail: sales@miczen.com | Web: www.miczen.com