

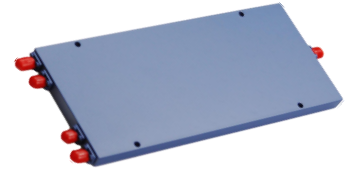
0.4-26.5GHz 4way Power Divider

P/N: MZP4004265GA



Description:

The power divider is a 4way power divider with a typical insertion loss of 5.4 dB and a typical isolation of 16dB across the frequency range of 0.4 to 26.5 GHz. The power divider can reach handling power 20W. Accept customization according to different needs.



- Radar Systems
- Communication Systems
- Receivers Systems

Electrical Specifications (+25°C) :

Parameter	Min.	Typ.	Max.	Units
Frequency Range		0.4-26.5		GHz
Insertion Loss			5.4	dB
Isolation (@0.4-1GHz)	16			dB
Isolation (@1-26.5GHz)	20			dB
Input VSWR			1.65	-
Output VSWR			1.5	-
Phase Unbalance			±7	°
Amplitude Unbalance			±0.5	dB
Power Handling		20		W
Impedance		50		Ω
Connector		SMA-Female		
Material		Aluminum		
Weight		-g		
Package Sealing		Blue Color(Standard)		

Environmental Specifications:

- ※ Operational Temperature -45°C~+85°C
- ※ Storage Temperature -55°C~+105°C



OBSERVE
PRECAUTIONS ELECTROSTATIC
SENSITIVE DEVICES

MICZEN THCHNOLOGIES CO.,LTD.

Phone: +86 28 65003621 | E-mail: sales@miczen.com | Web: www.miczen.com

